

AMBER

A MOMENT BURIED EN RESIN



那一刻

琥珀的記憶

FANTASTIC AMBERS AND WHERE TO FIND THEM



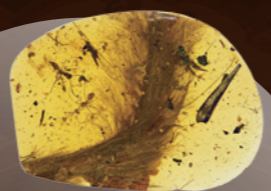
琥珀與他們的產地

琥珀，字源為「虎魄」，乃遠古植物的樹脂形成的化石，廣佈全球且顏色與形態各異。其中尤以波羅的海黃珀製成的工藝品、多明尼加所產的琥珀之王—藍珀、以及緬甸北方所產的帶有生物標本的虎珀最具特色。而臺灣也有零星的琥珀產出，甚至有昆蟲化石包埋其中，一起開啟探索尋找琥珀的探險吧！

Amber, which is “hupo” in Mandarin, refers to fossilized resins in diverse appearance and colors from various localities around the globe. The crafts made of yellowish Baltic amber, the king of amber—Dominican blue amber and the organism-included Burmese amber are the most remarkable. Taiwan also yields amber, one of which is so far the only arthropod-including amber. Join us for the adventure into *The Moment Buried En Resin!*



ANASTASIA: FAKE AMBER OR NOT



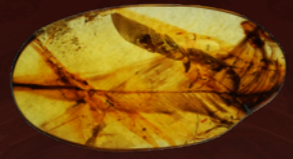
真假琥珀

琥珀自古便被視為一種寶石，因此辨認其真假便至關重要，因為不管真琥珀或假琥珀，都對科學的發展有所影響。事實上，辨認琥珀最好也最直接的方法是用火燒，但誰會願意把自己的珍稀琥珀拿出來燒呢？因此，一起到真假琥珀區來，一探究竟，找出那些以假亂真的琥珀吧！

Amber has been long considered gem and thus its authenticity is crucial. Either real or fake amber has impact on the development of science. In fact, burning is the best identification method but not the practical one given the preciousity of amber. Therefore, come to have a tour in the exhibition and you will learn how to identify real amber from fake!



EVOLUTION: HINTS FROM AMBER



進化特區

自2013年以來，大量內含白堊紀生物的緬甸琥珀出土，數次攻佔了頂尖科學期刊的版面。舉凡鳥、恐龍尾巴、菊石、螃蟹、蜥蜴產卵等，提供我們前往遠古世界的一扇窗戶，窺探進化特區裡豐富的演化歷史。

Since 2013, an unprecedented number of amber inclusions were uncovered from the Cretaceous deposits of Myanmar and have been on the cover of top scientific journals. For instance, a bird, a dinosaur tail, an ammonite, a crab, a laying lizard, all of which offer a window to the deep past that allows us to infer the fascinating evolutionary history.



CRETACEOUS PARK: WHERE THE STORY BEGINS



白堊紀公園

一沙一世界，一花一天堂。一顆琥珀也有同樣道理。1993年侏羅紀公園第一集上映，從一顆有蚊子的琥珀複製出了恐龍，帶起了數十億美元的後續電影狂熱。然而，古生物學家進展到哪裡了？我們能複製恐龍了嗎？

“To see a world in a grain of sand, and a heaven in a wildflower.” Amber does the same. The movie Jurassic Park in 1993 showcased the dinosaur cloning from a mosquito-included amber, which further brought a follow-up more than billions of dollars profit. However, how far have paleontologists reached? Can we clone dinosaurs nowadays?



MEMENTO: A MOMENT EN AMBER



記憶拼圖

琥珀可以是科學的載體，也是藝術的結晶。將琥珀細心琢磨、拼貼後，呈現以科學為本質的藝術品，最適合做為這場琥珀特展的奇異旅程的終點。本區將博物館變成美術館，看看琥珀在文化、歷史、社會上的角色吧！

Amber is a carrier of science and a concretion of art. After being polished and merged, a number of amber pieces were transformed into science-based artworks, which mark the terminal of the tour of the exhibition. This section entitled “Memento” turns science museum into an art museum, leading you to a tour of the cultural, historical, and social role of amber.

